

Walcom[®]:

our solution

in your hands

Walcom[®] and bodyworks, an adventure that began sixty years ago when Walcom[®] Wally took its first steps in the professional painting world in 1945. Sixty years of constant growth, innovation and improvements, of new products and innovative ideas to make the work of professionals more efficient and productive. Spray guns for finishing, base applications and touch-ups that stand out on the market for their exceptional features in the paint world:

- High level atomization;
- High transfer efficiency;
- Low air consumption.

From the glorious FX to the new, modern and innovative GENESI, from the solid and robust STV to the lightness and versatile SLIM, from traditional conventional systems to the ecological HVLP system to the more recent HTE systems; always meeting the strictest regulations in effect and, above all, satisfying the user's needs, the true judge of business success. With your recommendations we have been able to continually improve and this is what we intend to continue doing to succeed in presenting products that meet your demands and needs.

However, Walcom[®] is not just spray guns, but a professional range of bodyworks products: paint accessories, 1, 2 or 3 stage air filtering systems for precise work, guns for protective soundproofing and Silicon, guns for water base paint drying and, recently added, gun washers for correct spray gun maintenance. Walcom[®] is also professional customer assistance in spray gun and the entire range use, to share our experience with you, to understand how to improve to be ready to solve your problems.

We are all this, a company of people with the will to compete in this difficult, demanding and professional sector; to grow and help you to grow, with the humbleness to listen and the determination to improve, always. We offer our solutions and place them in your expert hands.



GENESI

The new generation of professional spray guns conceived from the FX experience of over 15 years of hard work in the bodyworks and industrial sectors. Genesi is the combination of three aspects essential to professional work, quality atomization, certified high transfer efficiency, low air consumption added to other important features such as easy maintenance and durability. A complete spray gun with a wide range of available nozzles that make it suitable for a multitude of demands and needs in industry and bodyworks. It is innovative, from the single-axis system, that provides improved performance and easier maintenance, to the chrome-plated body and cap finish for higher resistance to the chemical aggression of solvents and thinners. It's ergonomic, reliable and high performance. It's made in Italy.

genesi_GEO

For over 10 years it represents the best performance system for HVLP spray guns.

The **patented GEO nozzle**, thanks to its particular goblet shape, associates the 0,7 bar cap pressure limit set by California ecologic regulation n. 1151 SCAQMD (South Coast Air Quality Management District) with excellent product atomization, exploiting the principle of dual atomization: the first inside the nozzle goblet, the second with cap atomization holes. It is therefore an

HVLP spray gun that provides optimum finish levels with all new generation paints for bodyworks and we recommend it for both bases (water and solvent) and for transparents HS and VHS.



REF. 9330**

- HVLP system with patented GEO nozzle (double atomisation).
- Handle's ergonomics and comfort.
- Certified transfer efficiency higher than 70%.
- Reduced air consumption: 250 lt/min.
- Working pressure: 2-2,5 bar.
- Easy use and maintenance.
- Painting distance: 10-15 cm.
- Available nozzles: (**) 0,7-1,0-1,3-1,5-1,7-1,9.



GEO H₂O cap:
Specific high atomization cap for water-base paints.



REF. 9340** REF. 9350**

genesi_HVLP

Spray gun for industrial and crafts sectors meeting California ecologic regulation n. 1151 SCAQMD (South Coast Air Quality Management District) but which, thanks to its versatility and high finish level, can also be used in bodyworks.

The special **high atomization** cap lets GENESI HVLP achieve high atomization with all types of paints in the sectors this spray gun is used.



REF. 9430**

- HVLP system.
- Handle's ergonomics and comfort.
- Certified transfer efficiency higher than 70%.
- Reduced air consumption: 250 lt/min.
- Working pressure: 2-2,5 bar.
- Easy use and maintenance.
- Painting distance: 10-15 cm.
- Available nozzles: (**) 0,8-1,0-1,2-1,3-1,4-1,7-1,9-2,5.



HVLP H₂O cap:
Specific high atomization cap for water-base paints.



REF. 9440** REF. 9450**

genesi_HTE

Newly conceived **high transfer efficiency** spray gun that permits the user to associate the typical methods of a conventional spray gun in terms of pressure, distance and application speed with those of a HVLP spray gun in terms of Transfer Efficiency.

The balance between the internal air passages and the head and nozzle diffusion holes let the operator work with a cap pressure of about 1,2 bar while still achieving > 65 % transfer efficiency. Ideal for transparent HS and VHS but also excellent for water and solvent bases, the GENESI HTE guarantees high atomization levels.



REF. 9530**

- H.T.E. system (high transfer efficiency).
- Handle's ergonomics and comfort.
- Certified transfer efficiency higher than 70%.
- Reduced air consumption: 290/340 lt/min.
- Working pressure: 2-2,5 bar.
- Easy usage and maintenance.
- Painting distance: 15-20 cm.
- Available nozzles: (**) 0,8-1,0-1,2-1,3-1,4-1,7-1,9-2,5.



HTE H₂O cap:
Specific high atomization cap for water-base paints.



REF. 9540** REF. 9550**

SLIM

Spray guns specifically designed for underbody applications in bodyworks and, thanks to its high versatility, for use in sectors such as woodworks and industry. Appreciated for its ergonomics and lightness, SLIM combines a high level of atomization with maintenance ease making it a sure reference in the professional sector. The high performance level of this spray gun has driven us to develop reduced diameter nozzles (like 1.3) for base and transparent applications and not just underbodies. The high transfer efficiency as well as the low air consumption are features shared by this and all spray guns in our product range.

SLIM HVLP

Spray gun that meets the California ecology regulation n. 1151 SCAQMD (South Coast Air Quality Management District), with certified transfer efficiency over 65%. Ideal in bodyworks for base application, it meets the most demanding painter's needs.



REF. 10060**

- HVLP system.
- Handle's ergonomics and comfort.
- Certified transfer efficiency higher than 80%.
- Reduced air consumption: 200 lt/min.
- Working pressure: 2 bar.
- Easy use and maintenance.
- Painting distance: 10-15 cm.
- Available nozzles: (**) 1,3-1,5-1,7-1,9-2,2.



REF. 10070**



REF. 10071**

SLIM

Conventional spray gun with high transfer efficiency thanks to the balance in air passages and atomization holes. Lightweight and versatile, it can be used in all professional sectors from bodyworks to industry.



REF. 10062**

- Conventional system.
- Handle's ergonomics and comfort.
- Certified transfer efficiency higher than 80%.
- Reduced air consumption: 240/280 lt/min.
- Working pressure: 2,5-3 bar.
- Easy use and maintenance.
- Painting distance: 15-20 cm.
- Available nozzles: (**) 1,3-1,5-1,7-1,9-2,2-2,5.



REF. 10072**



REF. 10073**

SLIM HD

Spray gun specific for high density product application such as Latex, Polyurethane, Gel Coat and Tixotropics in the wood and industrial sectors. Equipped with a dual pressure regulator for the spray gun and tank. The pressurized tank provides excellent finish levels thanks to the use of reduced diameter nozzles like 1.5.



REF. 10064**

- Handle's ergonomics and comfort.
- Reduced air consumption: 200/240 lt/min.
- Working pressure: 2-2,5 bar.
- Easy use and maintenance.
- Painting distance: 15-20 cm.
- Available nozzles: (**) 1,5-1,9-2,2-2,5.



REF. 10066**

SPRAY GUNS FOR TOUCH-UPS AND DECORATION

Spray guns and applications systems for bodyworks touch-ups and professional decoration. Adjustment precision, high quality components and finish let the operator achieve high-quality and extremely satisfying standards.

The touch-up spray gun that represents a growing must in the global bodyworks market, is now equipped with a new aluminium cap which, conceived from the experience matured in finishing and base guns, guarantees constant product atomization levels.

Low air consumption and high transfer efficiency (over 80%) make this series a solid reference in the bodyworks market.

STM HVLP

Spray gun specific for touch-ups that meets the California ecology regulation n. 1151 SCAQMD (South Coast Air Quality Management District), with certified transfer efficiency over 65%.



REF. 10022**

- HVLP system.
- Certified transfer efficiency higher than 80%.
- Reduced air consumption: 90/100 lt/min.
- Working pressure: 2-2,5 bar.
- Easy use and maintenance.
- Painting distance: 10-15 cm.
- Available nozzles: (**) 0,7-1,0-1,2.

STM

Spray gun specific for touch-ups in conventional version but with high transfer efficiency.



REF. 10011**

- Conventional system.
- Certified transfer efficiency higher than 80%.
- Reduced air consumption: 80/110 lt/min.
- Working pressure: 1,5-3 bar.
- Easy use and maintenance.
- Painting distance: 15-20 cm.
- Available nozzles: (**) 0,5-0,7-1,0-1,2.

GRAPHIQUE & GRAFO BAG

All you need for professional decoration and for those graphics that require precision and reliability, equipped with a complete and practical kit containing all the necessary accessories.



REF. 39000/W

REF. 39003/W

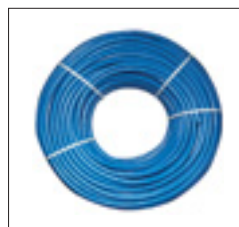
GRAFO BAG
SET OF ARTICLES FOR THE PROFESSIONAL DECORATOR PACKAGED INTO A CASE.

- Airbrush ideal for the professional decorator.
- Available with two cups and accessories for an easy application.
- Reduced air consumption: 10/25 lt/min.
- Working pressure: 0,5-3,5 bar.

PAINTING ACCESSORIES

A complete range of accessories for painting, fundamental for guaranteeing the quality of work.

From air flow regulators for constantly controlling the inlet pressure to filters and sieves for the paint product. This range is completed with a handy holder for 2 spray



RAGNO HOSE

POLYURETHANE AND PVC PROFESSIONAL HOSE, FLEXIBLE, RESISTANT, ANTI-OIL.

REF. 60250



SUPPORTER

PAINTED STEEL MAGNETIC SUPPORT FOR GRAVITY SPRAY GUNS.

REF. 60130



SSP2

2 LT. PRESSURIZED ALUMINIUM TANK COMPLETE WITH 1.5 mt. DOUBLE HOSE ALREADY CONNECTED.

REF. 90014

X 400 AUT



Professional automatic quick coupling for compressed air equipped with a blocking system with 6 stainless steel balls. Japanese Standard. CEMENTED STEEL front and nut guarantees long lasting and efficiency especially for heavy use such as pneumatic tools. Plugs in CEMENTED STEEL.



SPARE PARTS BOX GENESI

SPARE PARTS FOR GENESI SPRAY GUNS.

REF. 90141



SPARE PARTS BOX SLIM

SPARE PARTS FOR SLIM SPRAY GUNS.

REF. 90139

FILTERS

Walcom filters and filter groups mounted on the correct air installation (air compressor outlet, wall air outlets, painting booth) contribute in elevating the quality of work by filtering the air from any impurity which can be generated inside the workplace.

They guarantee the use of air perfectly treated of condensation, oil and residual humidity.

The body in anodized aluminium resistant to corrosion guarantees the longevity of these products, all supplied with double scale 60 mm manometers and air flow regulator. The air inlet 3/8" with 2 connectors 3/8" avoid dangerous narrowing in the air flow of the system.



FSRD 3

A MODULAR FILTER SYSTEM IDEAL FOR USE IN THE PAINTING BOOTH.

REF. 60123

Three different types of filters according to filtering.

Analysing the complete version, the FSRD 3, we can identify:

- 1st phase: synthetic fibre pre-filtering element that eliminates condensation. Filtering capacity: 5 micron. Automatic drain.
 - 2nd phase: oil separator filter. Filtering capacity: 0.01 micron. Manual drain.
 - 3rd phase: Silicon drying unit to eliminate residual humidity
- The filters work at maximum 12 bar pressure with a 600 lt/min air flow at 6 bar.



ESR

SILICA DRYING UNIT, TO ELIMINATE RESIDUAL HUMIDITY IN COMPRESSED AIR.

REF. 60129

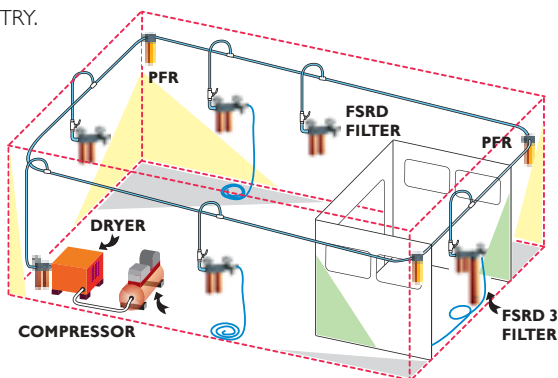


FSRD

AIR TREATMENT SYSTEM EXCELLENT FOR USE IN CAR-BODY WORKSHOPS AND INDUSTRY.

REF. 60121

EXAMPLE OF THE AIR PIPING IN THE BODY SHOP



PFR

FILTER UNIT FOR THE ELIMINATION OF CONDENSATION.

REF. 60127

COMPRESSED AIR GUNS



IM BODY

SPRAY GUN FOR THE APPLICATION OF SOUNDPROOF COATS FOR UNDERBODIES, MONO-COMPONENTS AND PROTECTIVE WAX.

REF. 50242/W

Complete range of compressed air guns for efficiency and long term professional use in the body-shop workshop.

From standard air compressed guns to those for mono-component soundproofing protective compounds, all are manufactured with a MOPLÉN body and the components are produced in brass and stainless steel. The new adjustable nozzle of the IA/L-FG allows to obtain different spray thickness according to the surface to be treated.



PC/NS-FG

GUN FOR APPLYING ADHESIVES, FILLERS AND SILICONE IN CARTRIDGES.

REF. 30038



IA/LU-FG

GUN FOR MONO-COMPONENT PROTECTIVE SOUNDPROOFING PRODUCT APPLICATION EVEN POLYURETHANE AND PROTECTIVE WAX BASED IN PRE-PACKAGED CANS. ALSO AVAILABLE IN THE 1 LT. CAN VERSION (IA/L-FG OR TS).

REF. 30023
REF. 30023 USA
REF. 30023 AM

ECODRY

The ECODRY drying gun is used to aid the drying of water-based paints: by blowing on the painted surface, it helps to evaporate the residual water thus reducing working time.

The ECODRY, exploiting the Venturi system, allows to increase of about 15 times the compressed air admitted. The compressed air must be filtered perfectly to avoid entry of impurities and compromission of finishing quality.



ECODRY

MANUAL VERSION, TO BE USED 40-50 cm FROM THE SURFACE KEEPING THE GUN IN CONTINUAL MOVEMENT. EQUIPPED WITH AIR FLOW REGULATOR AND ADJUSTABLE AIR FLOW.

REF. 60125



ECODRY STAND

EQUIPPED WITH 2 ECODRY GUNS, IT DRIES AMPLE SURFACES WITHOUT THE NEED OF AN OPERATOR. TUBULAR ANODIZED ALUMINIUM STRUCTURE ALREADY EQUIPPED WITH CONNECTION HOSE AND COUPLINGS.

REF. 60126

SPRAY GUN WASHER



EASY/S

3 TAP GALVANIZED PLATE GUN WASHER: CLEAN SOLVENT, ATOMIZED CLEAN SOLVENT, RECYCLED SOLVENT. ALSO AVAILABLE IN THE VERSION WITHOUT DOOR (EASY).

REF. 90061

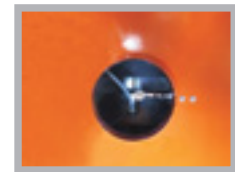
EASY/S and EASY GUN CLEANERS are used to manually clean spray guns; the best and most convenient solution for those who require a cleaning space for their work tools, keeping their work environment clean and tidy. Also suited for cleaning water-based paints.

Recycled solvent flow

Clean solvent atomized flow

Clean solvent flow

Solvent steam suction nozzle



AUTOMATIC SPRAY GUNS

Automatic spray guns for paint finishing in the industrial sector. Designed for high resistance, product longevity and easy maintenance, they guarantee a top quality finish with an excellent degree of transfer efficiency. The micrometric adjustment of product quantity and spray and the separate adjustment of fan and needle opening allow high-precision work. The body and the nozzle is CNC-finished for total product guarantee and efficiency. The air control inlets have rapid turning attachments to allow easier installation and use.



WA GEO 4

VERSION WITH DUAL ATOMIZATION NOZZLE WITH AUTOMATIC NEEDLE CLOSURE. ALSO AVAILABLE IN THE VERSION WITH SPRING NEEDLE CLOSURE (WA GEO 3).

REF. 3300**



WA HVLP 4

HVLP VERSION WITH AUTOMATIC NEEDLE CLOSURE. ALSO AVAILABLE IN THE VERSION WITH SPRING NEEDLE CLOSURE (WA HVLP 3).

REF. 3230**



WA HA 4

HIGH TRANSFER EFFICIENCY VERSION WITH AUTOMATIC NEEDLE CLOSURE. ALSO AVAILABLE IN THE VERSION WITH SPRING NEEDLE CLOSURE (WA HA 3).

REF. 3350**

WALMEC S.p.A. ITALY HEADQUARTERS

Via Trieste, 10 31025 S. Lucia di Piave (TV) ITALY Phone: +39 0438 6611 Fax: +39 0438 661333 - Email: walmec@walmec.com - Web: www.walmec.com

WALMEC S.p.A. PRODUCTION PLANT Viale della Vittoria - 24054 CALCIO (BG) ITALY